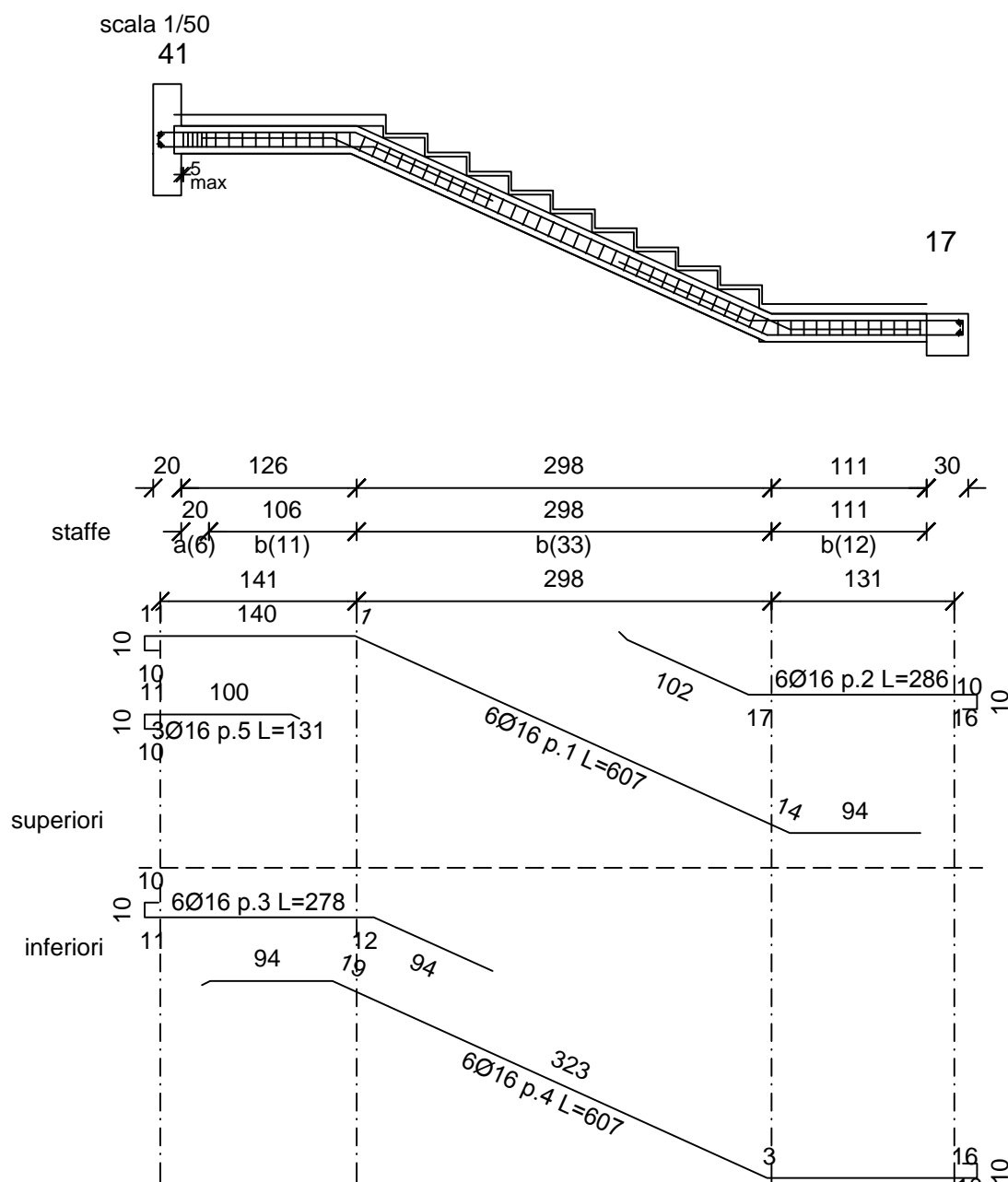
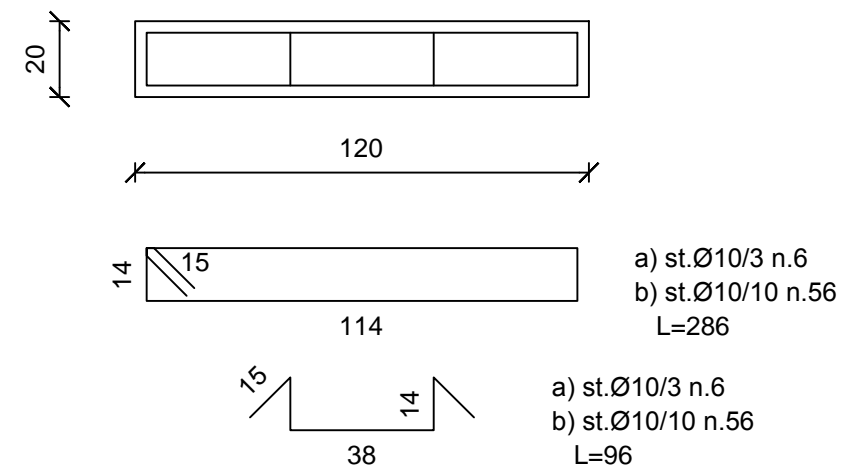


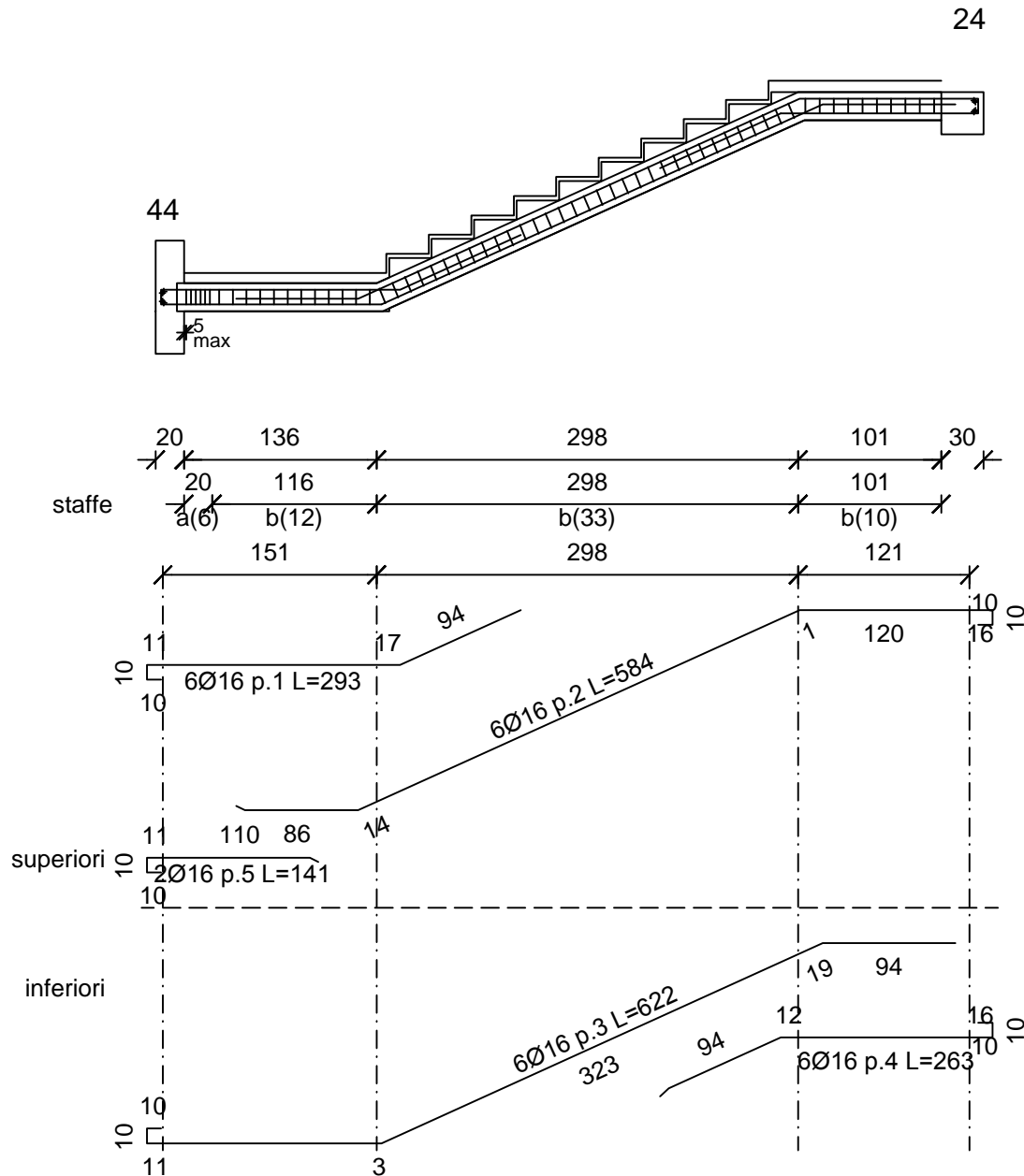
scala 1/5



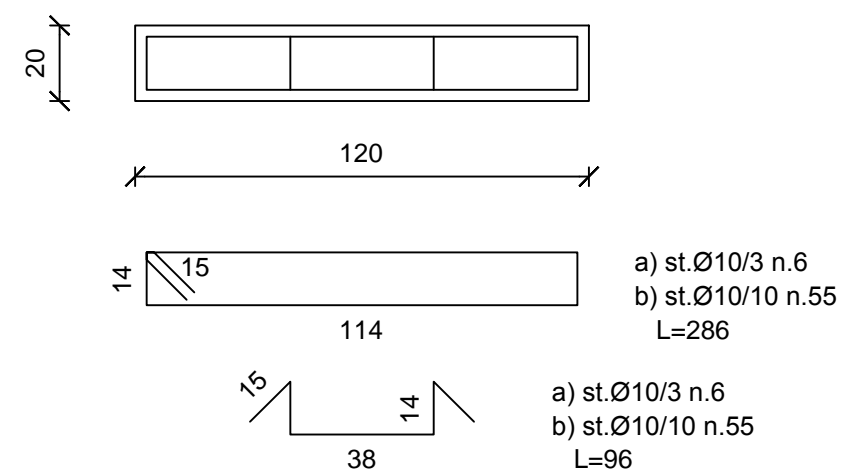
scala 1/20



scala 1/50



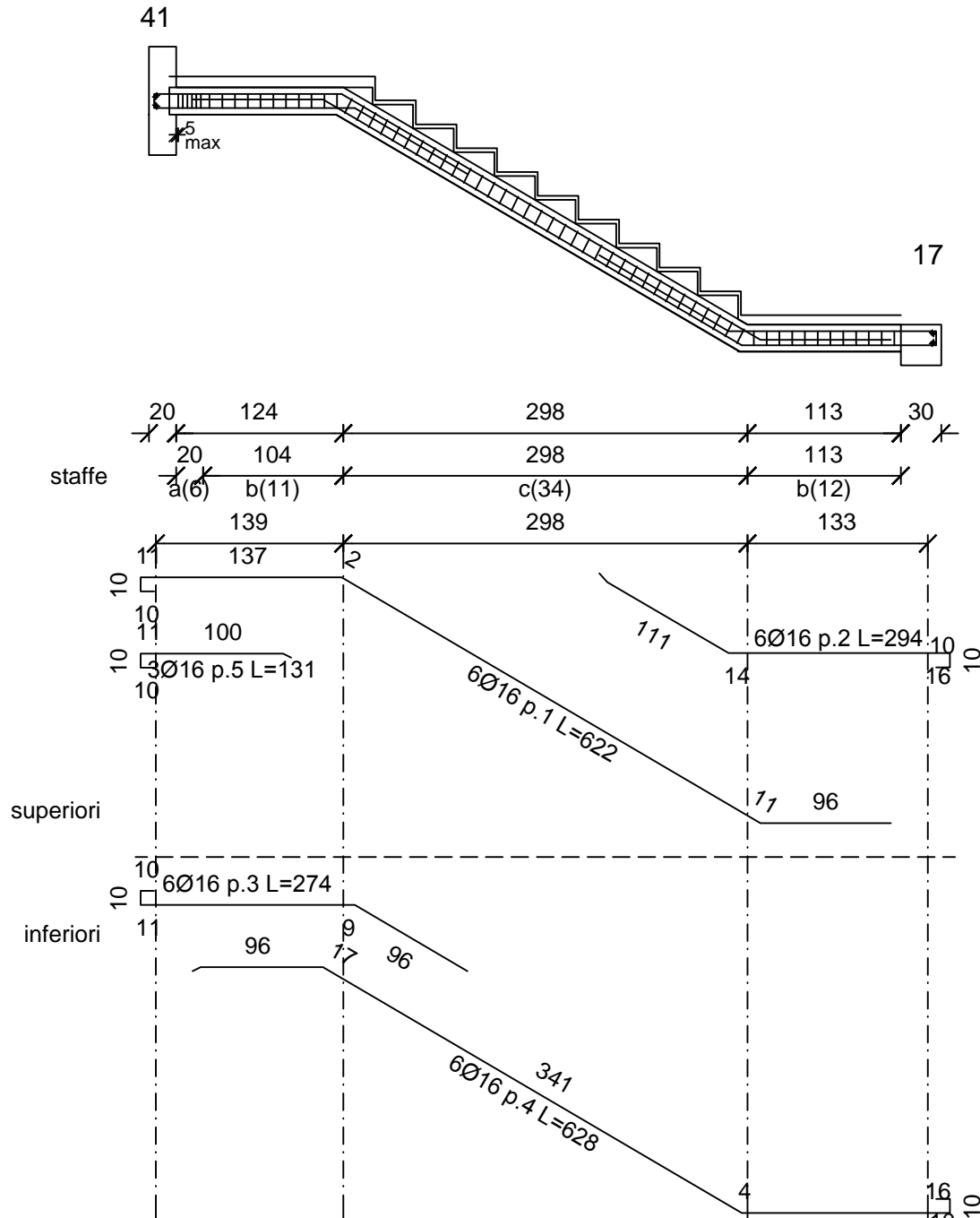
scala 1/20



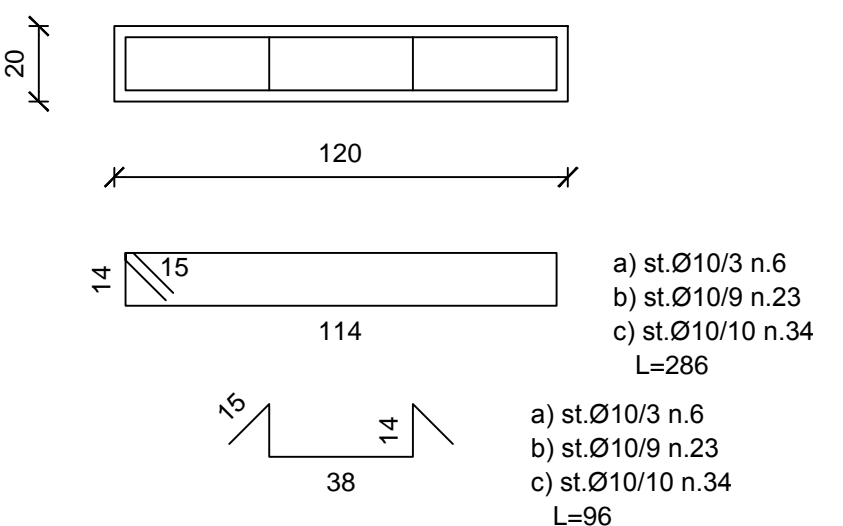
## Carichi

ACCIAIO B450C  
CALCESTRUZZO C25/30 XC2 S3

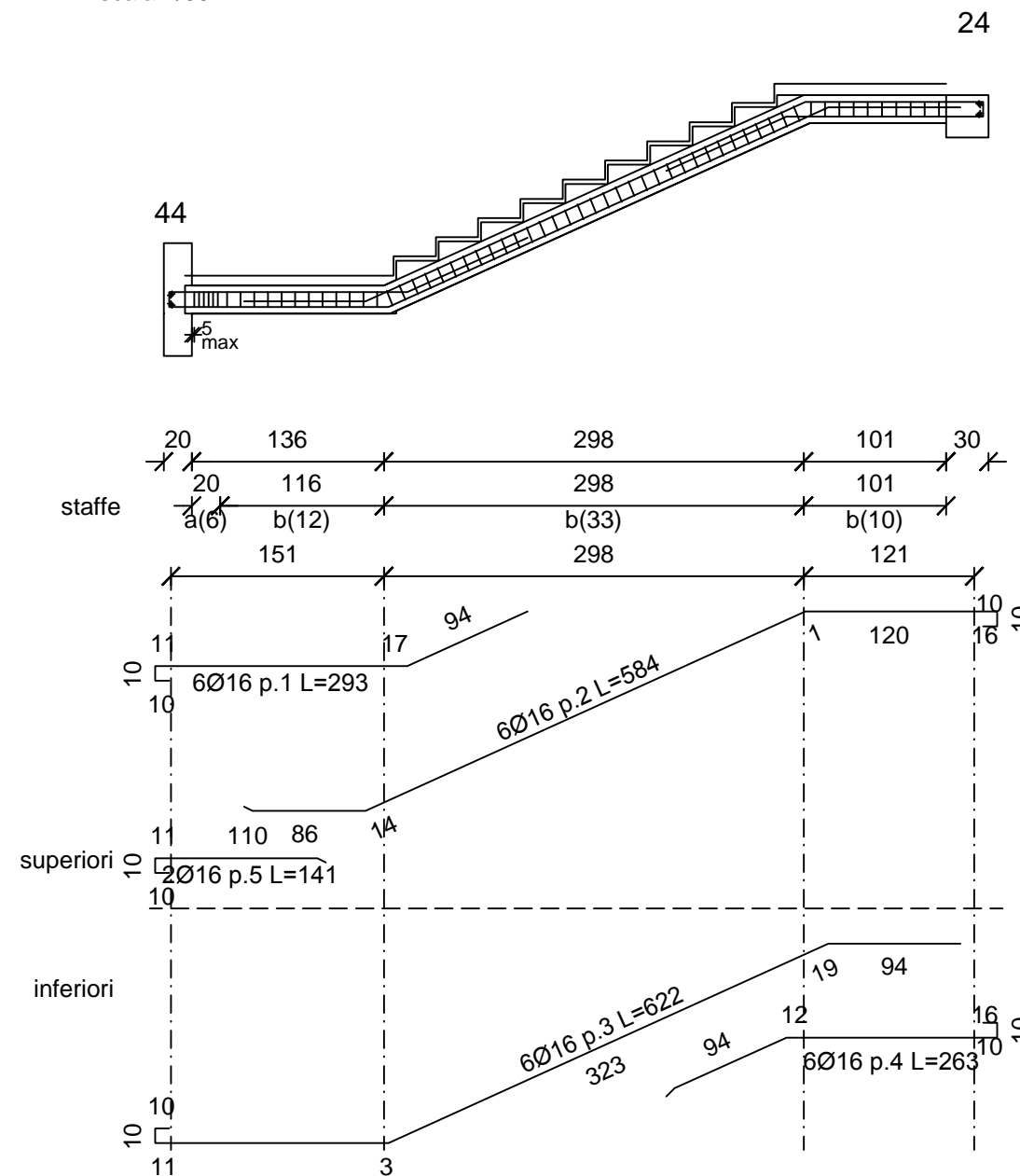
scala 1/5



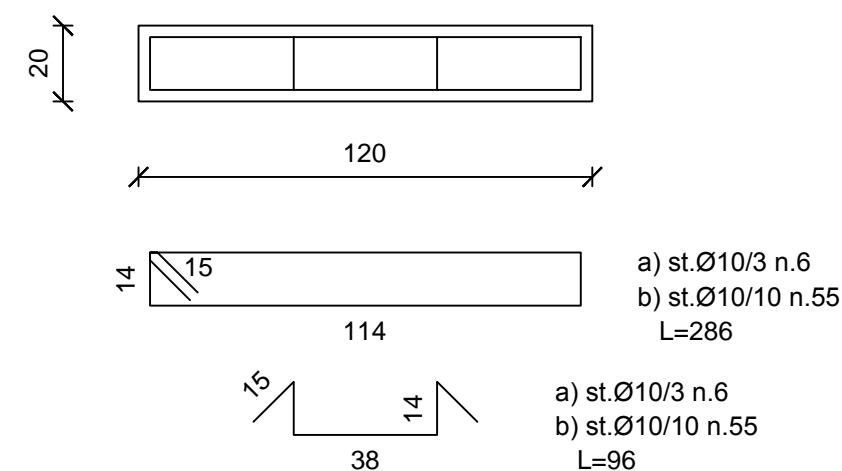
scala 1/20



scala 1/50



scala 1/2



## Finanziamento: € 2.000.000,00

Finanziamento integrativo: € 600.000,00 (Economie rivenienti dalle Leggi 457/78, 67/88 e 179/92)

TIMBRO	<p>IL RESPONSABILE UNICO DEL PROCEDIMENTO:</p> <p><b>ing. Vincenzo De Devillis</b> (Dirigente del Settore Tecnico)</p>
	<p>I PROGETTISTI DELL'ARCHITETTONICO:</p> <p><b>arch. Anna Maria Tomasulo</b> u.o. Progettazione / Appalti</p> <p><b>geom. Pietro Lorusso</b> u.o. Progettazione / Appalti</p>
	<p>IL PROGETTISTA DELLE STRUTTURE E DEGLI IMPIANTI TECNOLOGICI:</p> <p><b>arch. Antonio Palma</b> Via P. Cascavilla n. 2 - 71013 San Giovanni Rotondo</p>

TAVOLA	TITOLO		SCALA
St 04	Progetto: CARPENTERIA SCALE IN C.A.		1:50 - 1:20
	FABBRICATI n. 1 - 2 - 3		DATA
AGGIORNAMENTI	L'IMPRESA	IL DIRETTORE DEI LAVORI	
RIF.			